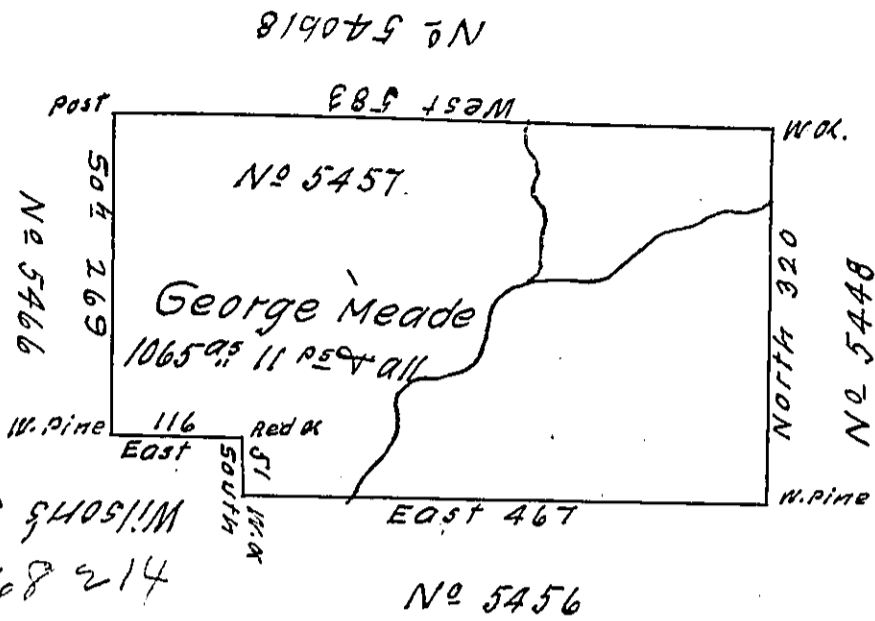


X - 282

a 77-225



a 77-271

Wilson's Survey
a 68-214

No 5456

a 77-278

Situate on the waters of Sinnemahoning Creek in North^d County containing 1065^{ac} 11^{ps} and the usual allowance for roads. Surveyed May 13th 1794 for George Meade in pursuance of a warrant No. 5457 dated 3 March 1794

John Canam D. S.

Daniel Brodhead Esq^r S. G.

IN TESTIMONY that the above is a copy of the original remaining on file in the Department of Internal Affairs of Pennsylvania, made conformably to an Act of Assembly approved the 16th day of February, 1833, I have hereunto set my Hand and caused the Seal of said Department to be affixed at Harrisburg, this twenty sixth day of January 1912

Henry Howard
Secretary of Internal Affairs.